

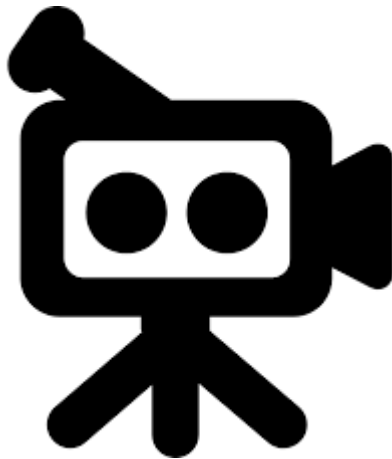


Journey to Hybrid Cloud (Azure Backup & Adoption)

Catherine Tan and Victor Wei

Digital Solutions – Storage Management Services





20TB data

Cool storage

A million dollar
question..

1 year
retention

(max) 1 TB
retrieval per
month

Express
Metered (1GB)



Data
Centres

Traditional
Backup

Tape
Libraries

Media
Encryption



8PB

159TB NAS

987 VMs

1yr / 7 yrs.

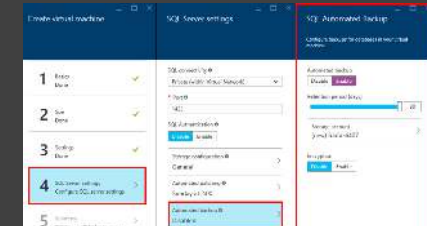


and...WHY?

- 
- Organisation Strategy
 - Our digital campus is our 3rd largest campus and fastest growing campus
 - Deliver MORE value
 - Future-proof

Things we have tried....

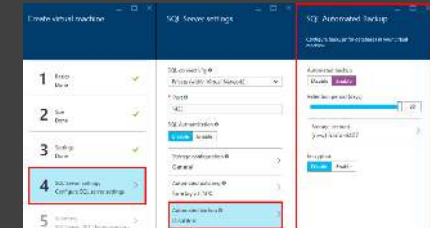
1. MS Azure Backup Server (MABS)
2. Cloud to cloud replication
3. Direct to cloud e.g. cloud connector
4. Storage gateway
5. The native IaaS VM backup



Things we have tried....

....

6. Logic Apps
7. Third party e.g. FluentPro for MS Project Online
8. Backup gateway
9. Microsoft Azure Site Recovery service (investigated)
10. Leverage on 'zerto' capability (investigated)





Things you need to know...

1. Information governance
2. Cost optimisation – setup ‘alert’ on budget !!!!!
3. Service management via ‘tag’
4. Network connectivity
5. Cybersecurity concerns
6. Readiness - don’t force the process
7. Be prepared to lose your magic touch...

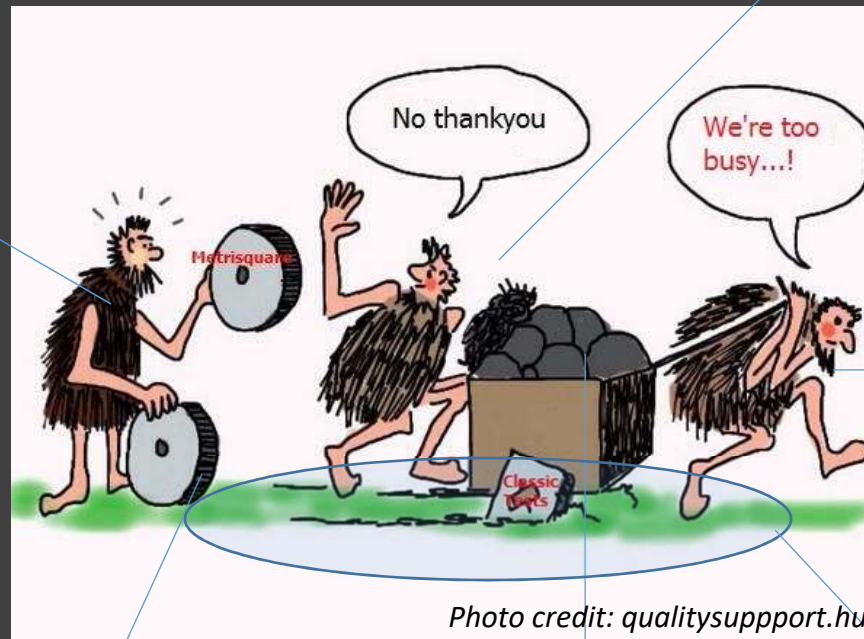
It is different



Things to learn....

Service
broker

Help (where?)



Strategic
Direction

Innovate

Know our data

Governance and
Regulations

Update firewall configurations that whitelist Logic Apps IP addresses by September 30, 2018

You're receiving this email because one or more of your logic apps could be affected by an upcoming change.

To improve traffic flow, we're adding new outbound IP addresses for Azure Logic Apps. If you have firewall configurations that whitelist Logic Apps IP addresses, you'll need to update them to keep your logic apps running as expected.

If you don't have this type of firewall configuration, you won't be affected by change and don't need to take any action.

Required action

Update your firewall configurations to include the [IP addresses in this list](#) by Sep 30, 2018.

If you have questions, please [contact us](#).

<https://azure.microsoft.com/en-au/status/>

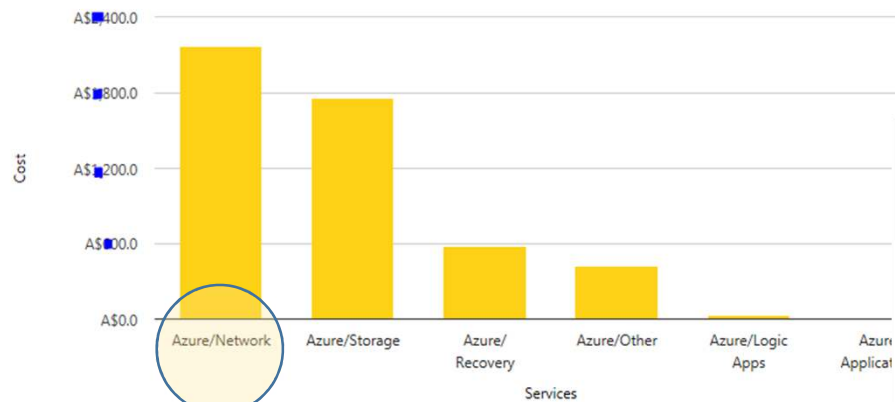
[illegible]

Cost by Services

Active Filters : Policy=Standalone

Click on columns or pie segments for granular view.

Projected Cost: **AS\$4,123**



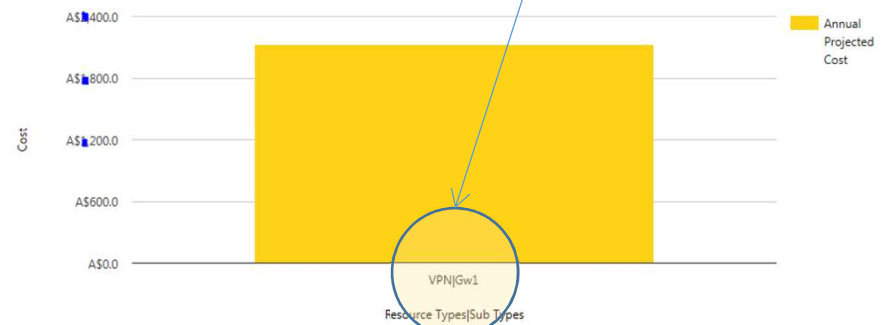
Azure/Network

VPN | GW1

Cost by Resource Types and Sub Types

Active Filters : Service=Azure/Network Account Name=ITI Backup
Region=all Availability Zone=N/A Policy=Standalone

Projected Cost: **AS\$123**





To change the
game...

Change our
mindset

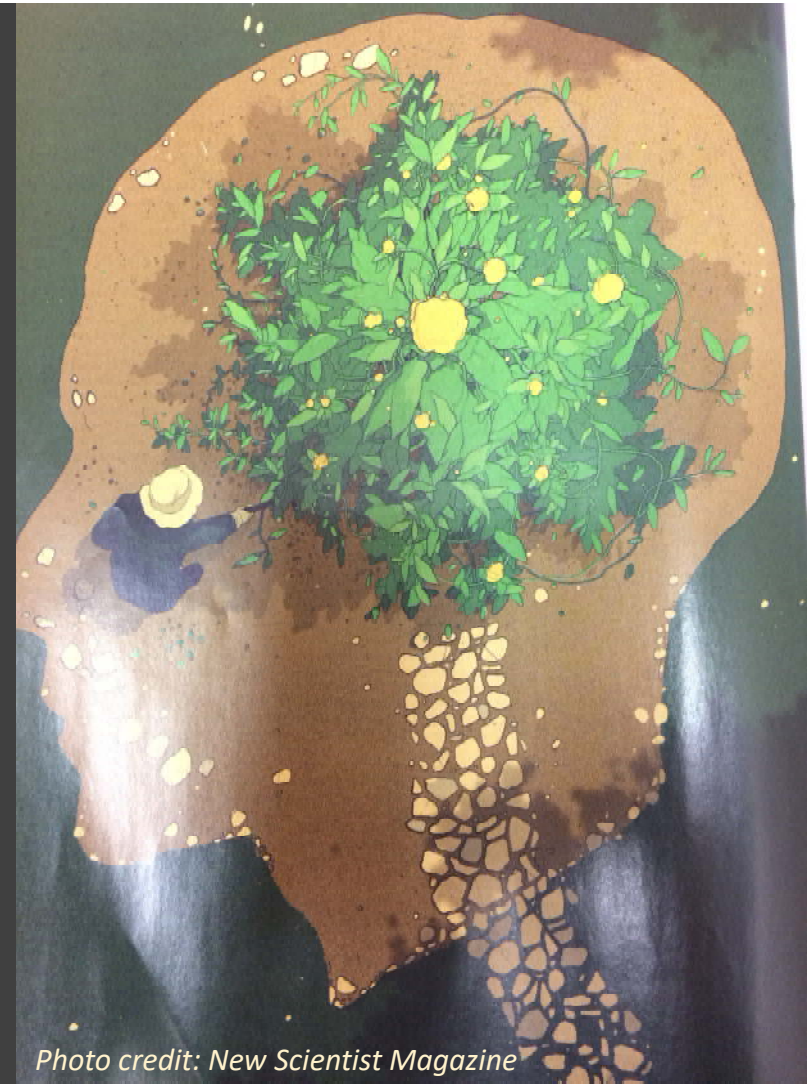


Photo credit: New Scientist Magazine



Data intelligence

Combat ROT data

Backup.. -> MORE

Global management

Public cloud backup

50% offsite to cloud

Multi-cloud ready

Mature the service

When you can't change the direction of the wind, adjust your sails - H. Jackson Brown, Jr.



Photo credit: alanmason.wordpress.com

QuestNet2018 (Twitter: #QN18Cairns)

Catherine Tan (catherine.tan@griffith.edu.au)

Victor Wei (v.wei@griffith.edu.au)



References:

[Microsoft Risk Management Guide for the use of Azure for Protected classified workloads.](#)

[Information Privacy Act 2009](#)

[MARS \(Microsoft Azure Recovery Service\) Agent](#)

[MABS \(Microsoft Azure Backup Server\)](#)

[Best Practices for Cloud Service Governance and Management | Gartner Milind Govekar](#)

Predicts 2018: Storage I Gartner ID:G00346523

How to leverage Public Cloud IaaS for Backup and Recovery | Gartner ID: G00336687

Magic Quadrant for Data Centre Backup and Recovery Solutions | Gartner ID: F00311191

THANK YOU